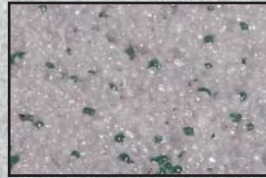


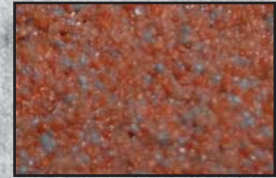
TC691



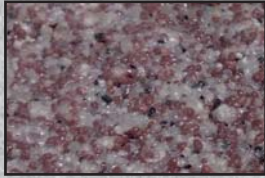
TC692



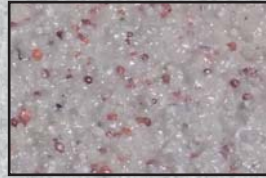
TC694



TC695



TC696



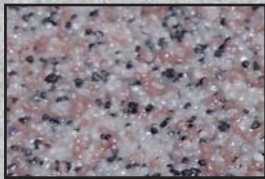
TC698



TC699



TC700



TC701



TC702



TC703



TC704



TC705



TC706



TC707



TC708



TC709



TC710



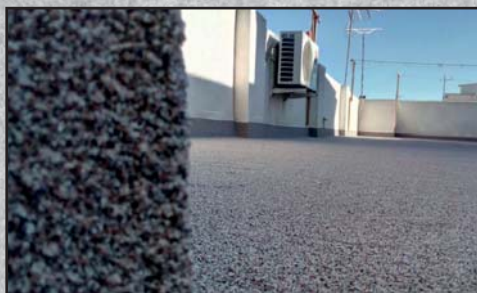
WHITE1



BLACK20

\*The colours of this chart are indicative and might be different to true-colours depending on the type of paper or printer. Accurate colours can be confirmed by the certified official sample book.

# Quartz coating STONE VIPEQ

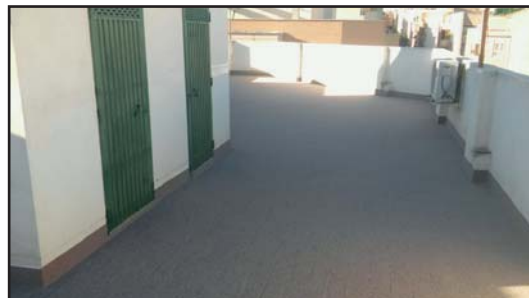




# STONE VIPEQ



STONE VIPEQ is a colored mineral-synthetic finish coat with high surface hardness and flexibility. Selected quartz particles, binders and additives make it suitable for both outdoor and indoor applications.



## APPLICATIONS

STONE VIPEQ can be applied as:

- A complete solution for floors on roofs, flat roofs, passable balconies and terraces.
- Finishing hard floor on pedestrian sidewalks, public floors, parks, etc.
- Interior or exterior non-slippery floors in new buildings or renovations.
- Baseboard or skirting board on walls and interior design.
- Final coating on walls and floors of bathrooms, tiling and other substrates, without removing them.

## CHARACTERISTICS

- Estimated performance of the product is 3.5-3.8 kg/m<sup>2</sup>.
- High superficial hardness and non-slippery.
- High adhesive coating with a previous application of primer IMPEX VIPEQ 5/1.
- High flexibility and elasticity.
- Possibility of colours combination.
- Possibility of different finishing textures depending on the application method:
  - Spray-gun: 2 options for texture
  - Trowel: smooth
  - Spray-gun + trowel: smooth
  - Spray-gun + trowel + slight spray-gun: fine grainy

## STONE VIPEQ SYSTEM

- 1) Primer: STONE VIPEQ must be applied on a previous application of primer IMPEX VIPEQ 5/1 that increases adherence on the substrate.
- 2) STONE VIPEQ
- 3) Additional layer of Sealing Resin PU3 for protection of STONE VIPEQ coatings on floors or roofs that are specially exposed to weathering or traffic demanding conditions.



1) IMPEX VIPEQ 5/1 (primer)



2) STONE VIPEQ



3) PU3 (optional sealing resin)

## PACKAGING

20 kg. plastic pail. 720 kg pallet (36 pails).

